

Delay Metrology

Context

To assess the delay in a deployed network, one may easily exploit the results given by the ICMP ping command. However, this measure may not reflect the actual delay that applications may face. To properly measure the delay in a given infrastructure, we recommend to compare the results of various delay measurements jobs. Depending on the targeted evaluation (application level, transport level, network level, etc.), one measure may be more relevant than one other.

The most common way to assess delay in a deployed network remains to use round-trip time metric. Our choice is to use two tools one at ICMP level (fping) and one at UDP level (hping) to enforce the measurement.

However, this value may not reflect the real situation of the network of interest if the links from test host and to test host are unbalanced. To obtain this unbalanced delay assessment and better understanding of the tested network, one may use one-way delay tool which provides delay values on each link. The tool owping (composed of two jobs: owamp-client and owamp-server) is provided by OpenBACH in the [One Way Delay reference scenario](#).

RTT Delay diagnostic including post processing comparison scenario

This scenario provides a delay diagnostic of a deployed network. It is assumed that the network is stable. The diagnostic allows to sequentially assess different delay metrics (RTT and one-way delay)

Objective

The purpose of this scenario is to compare delay results obtained from jobs: fping, hping (RTT) and owping (One-way Delay).

- fping measures the RTT delay (in ms) using the ICMP protocol (i.e. time since ICMP request sent until ICMP response received)
- hping measures the RTT delay (in ms) using the negotiation packets for opening a TCP connection (i.e. time since SYN sent until SYN-ACK received).

Hping and fping (which are persistent jobs) are launched during the duration time (default 10).

Methodology

Two approaches are used to analyse the delay:

- The default first one considers a sequential launch of the three jobs in order to avoid any overload caused by the injected test packets (active measurement methods).

- The second one considers a parallel/simultaneous launch of the two jobs

The scenario proposed herein will then:

- Launch subscenarios `delay_simultaneous` or `delay_sequential` as subscenarios (allowing to compare the RTT measurement of `fping`, `hping`).
- Launch two postprocessing jobs to compare the time-series and the CDF of the delay measurements.

These scenarios have been written using the [scenario builder](#).

How to launch it

The scenario is available in [network_delay](#) . It uses helpers (see [API scenario manual](#) for more information on helpers), and subscenarios `delay_sequential` and `delay_simultaneous`.

You must already have a project (i.e. “your_project”), two entities in the project (a server and a client), the `hping/fping` jobs installed in the client. You also need to install `histogram` and `time-series` jobs on the “your_entity”.

The reference scenario script [generate_network_delay](#) will allow to launch it as follows.

```
python3 generate_network_delay.py -p your_project --client your_client_entity --ip_dst @IP --entity_pp your_entity run
```

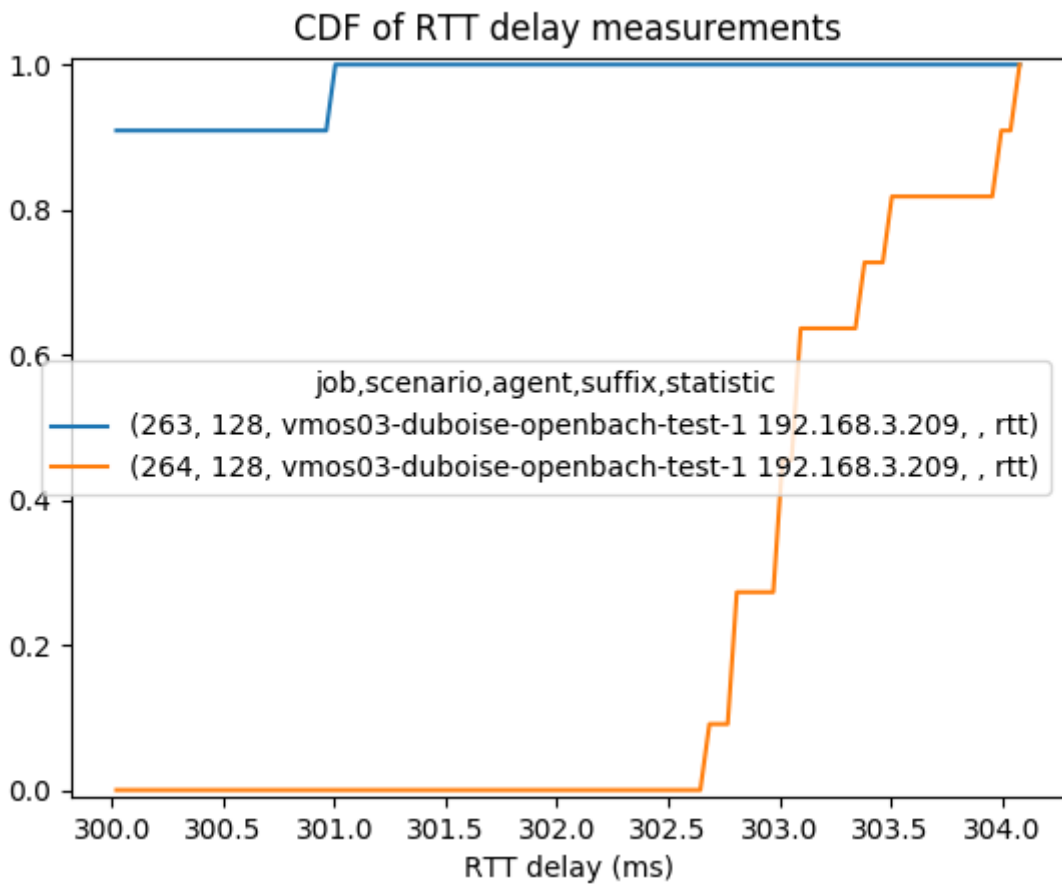
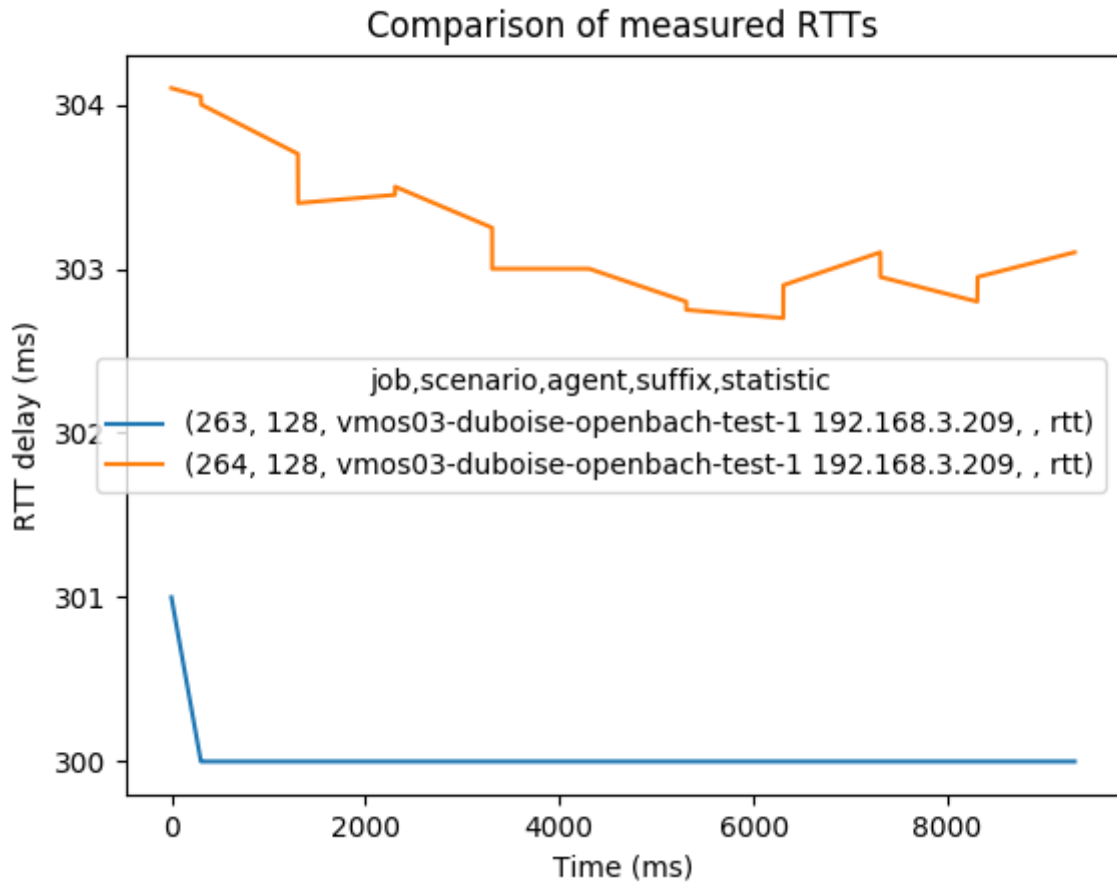
By default, it launches the scenario with the sequential methodology. If you want to launch the simultaneous one, you should add “`-simultaneous`” to your arguments.

Alternatively, it can create a JSON file that could be imported to the OpenBACH web interface:

```
python3 generate_network_delay.py -p your_project --client your_client_entity --ip_dst @IP --entity_pp your_entity build .
```

You can use the “`-o`”, “`-override`” option to have the provided scenario builder (if any) replace the current scenario.

An example of the type of results that this scenarios is capable of plotting is shown below:



The plots can be downloaded from the OpenBACH web interface: go to the scenario instance, click on export CSV, check the histogram and time-series boxes and click on Download.

From:

<https://wiki.net4sat.org/> - **Net4sat wiki**

Permanent link:

https://wiki.net4sat.org/doku.php?id=openbach:exploitation:reference_scenarios:network:delay:index&rev=1556270652

Last update: **2019/06/11 16:18**